

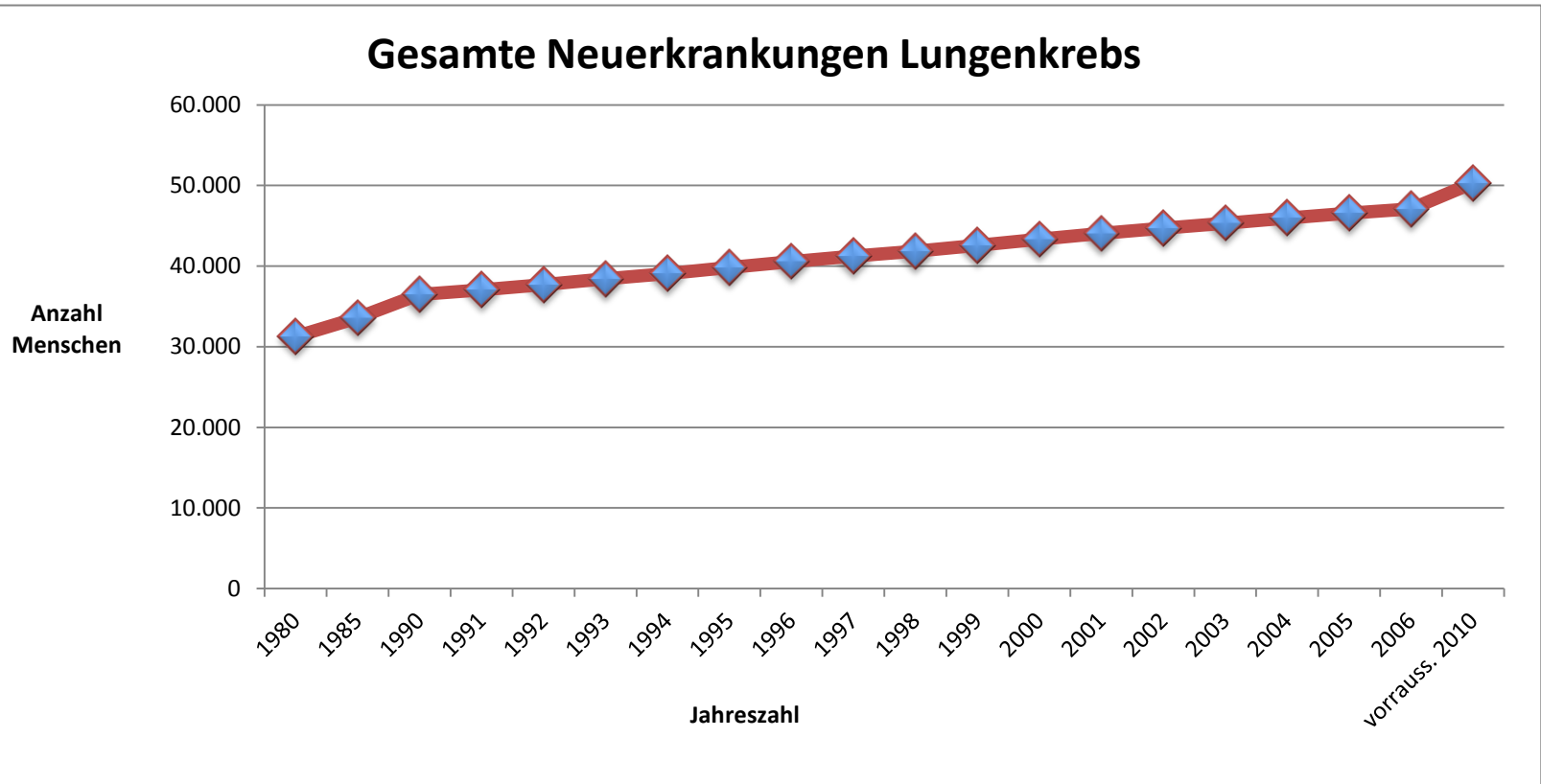
Gesamte Zahl der Neuerkrankungen: Lungenkrebs

MÄNNER	Alter													
	0-14	15-34	35-39	40-44	45-49	50-54	55-59	60-64	65-69	70-74	75-79	80-84	85+	Gesamt
1980	0	126	231	507	1.389	1.910	3.905	3.611	4.457	4.121	3.765	2.035	830	26.890
1985	0	113	173	465	1.529	2.067	3.994	4.725	3.400	4.509	3.843	2.269	917	28.000
1990	0	91	169	427	1.216	2.635	3.836	5.251	5.188	3.567	3.728	2.276	1.066	29.450
1991	0	87	166	447	1.094	2.677	3.899	5.279	5.252	3.971	3.484	2.252	1.082	29.690
1992	0	83	164	461	1.022	2.650	4.017	5.237	5.374	4.469	3.152	2.249	1.106	29.980
1993	0	79	162	466	990	2.563	4.177	5.108	5.634	4.909	2.821	2.259	1.131	30.300
1994	0	74	159	464	969	2.435	4.313	5.030	5.947	5.172	2.636	2.251	1.149	30.600
1995	0	70	157	460	989	2.233	4.395	5.086	6.184	5.278	2.742	2.187	1.167	30.950
1996	0	66	155	456	1.025	2.014	4.423	5.197	6.289	5.344	3.053	2.035	1.179	31.240
1997	0	61	153	452	1.039	1.893	4.338	5.364	6.268	5.460	3.408	1.838	1.196	31.470
1998	0	57	150	447	1.035	1.842	4.156	5.571	6.120	5.694	3.710	1.649	1.213	31.640
1999	0	53	147	444	1.024	1.819	3.941	5.747	6.051	5.971	3.887	1.568	1.227	31.880
2000	0	49	142	441	1.008	1.866	3.613	5.854	6.109	6.191	3.991	1.646	1.215	32.130
2001	0	45	137	438	996	1.939	3.270	5.880	6.238	6.277	4.081	1.853	1.172	32.330
2002	0	42	130	433	989	1.969	3.094	5.738	6.409	6.232	4.216	2.075	1.113	32.440
2003	0	39	122	427	985	1.966	3.038	5.469	6.612	6.074	4.448	2.260	1.057	32.500
2004	0	36	114	418	984	1.942	3.029	5.143	6.756	5.989	4.727	2.382	1.039	32.560
2005	0	34	104	405	987	1.907	3.139	4.674	6.781	6.052	4.958	2.462	1.074	32.580
2006	0	32	95	388	989	1.877	3.299	4.184	6.692	6.163	5.107	2.545	1.128	32.500
vorrauss. 2010	0	31	73	363	1.088	2.055	3.589	4.185	5.760	7.815	5.552	3.263	1.373	35.150

Gesamte Zahl der Neuerkrankungen: Lungenkrebs

FRAUEN	Alter													
	0-14	15-34	35-39	40-44	45-49	50-54	55-59	60-64	65-69	70-74	75-79	80-84	85+	Gesamt
1980	0	37	57	118	93	156	589	636	725	806	569	380	231	4.400
1985	0	44	63	157	207	254	553	911	635	1.045	844	550	317	5.580
1990	0	46	84	196	294	502	603	912	1.137	939	1.081	785	438	7.020
1991	0	46	87	218	294	557	646	922	1.159	1.080	1.062	830	464	7.370
1992	0	46	90	238	304	601	704	933	1.178	1.256	1.006	878	497	7.730
1993	0	46	93	255	324	633	777	944	1.209	1.428	935	929	533	8.110
1994	0	46	96	269	348	656	855	973	1.247	1.557	902	977	568	8.490
1995	0	45	99	281	387	654	929	1.031	1.282	1.619	968	1.002	606	8.900
1996	0	45	102	291	435	641	999	1.110	1.310	1.642	1.122	987	642	9.330
1997	0	44	105	302	479	652	1.049	1.214	1.331	1.662	1.308	939	681	9.760
1998	0	43	108	312	514	687	1.079	1.337	1.345	1.695	1.476	890	722	10.210
1999	0	42	110	322	544	732	1.100	1.473	1.380	1.739	1.609	873	763	10.690
2000	0	41	110	334	570	810	1.088	1.599	1.457	1.771	1.671	945	791	11.190
2001	0	40	110	345	594	907	1.063	1.720	1.557	1.798	1.700	1.089	799	11.720
2002	0	39	109	355	619	994	1.091	1.805	1.680	1.814	1.725	1.250	792	12.270
2003	0	38	106	363	643	1.069	1.165	1.856	1.826	1.820	1.763	1.401	783	12.830
2004	0	38	102	368	668	1.134	1.268	1.889	1.970	1.853	1.809	1.520	798	13.420
2005	0	37	97	368	693	1.190	1.441	1.865	2.089	1.934	1.851	1.592	852	14.010
2006	0	36	91	363	718	1.245	1.670	1.818	2.180	2.041	1.881	1.635	924	14.600
vorrauss. 2010	0	35	72	341	785	1.339	1.837	1.816	1.858	2.517	1.885	1.618	1.080	15.180

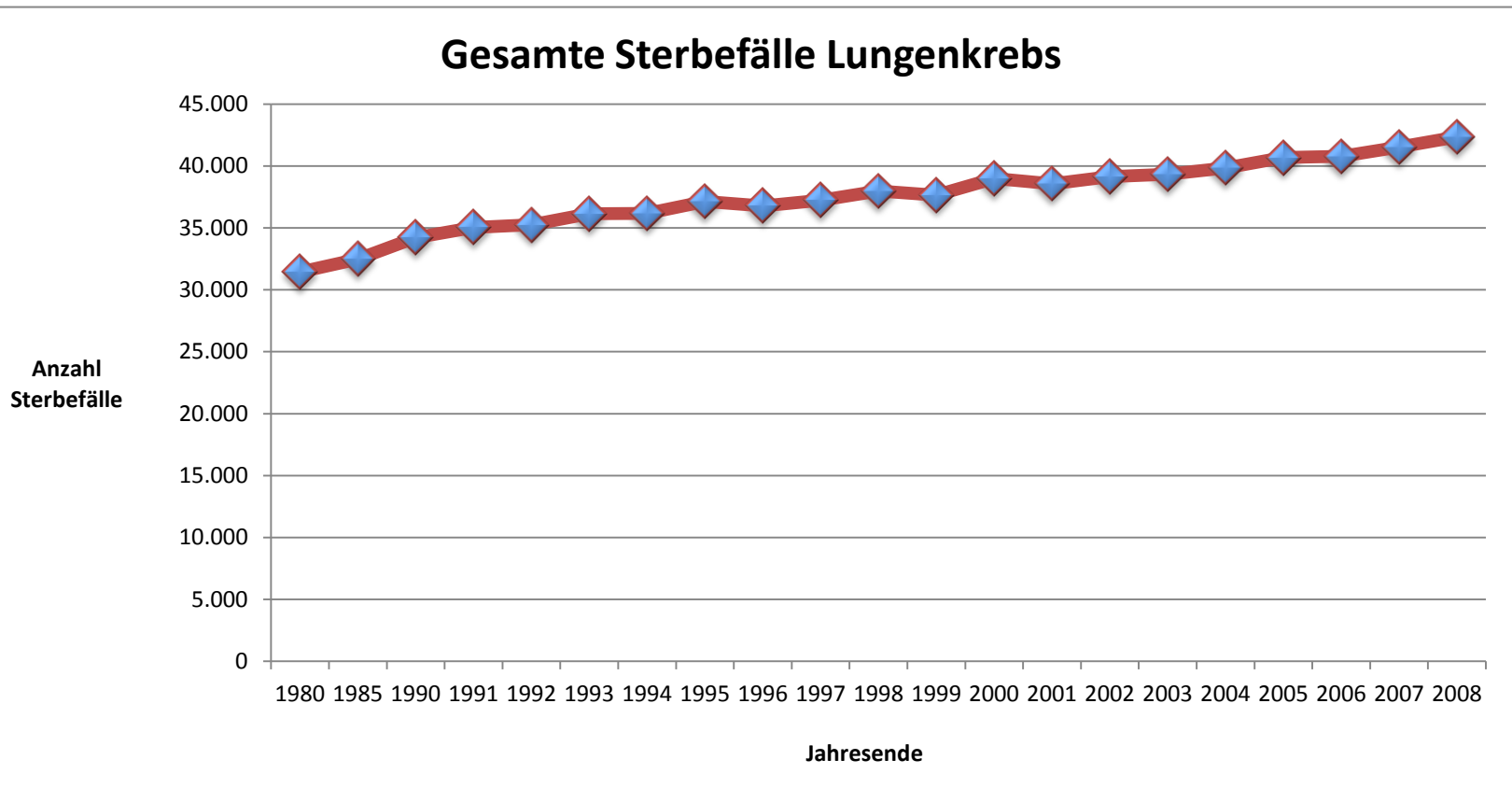
Gesamt	
1980	31.290
1985	33.580
1990	36.470
1991	37.060
1992	37.710
1993	38.410
1994	39.090
1995	39.850
1996	40.570
1997	41.230
1998	41.850
1999	42.570
2000	43.320
2001	44.050
2002	44.710
2003	45.330
2004	45.980
2005	46.590
2006	47.100
vorrauss. 2010	50.330



MÄNNER	Alter																		
	0-4	5-9	10-14	15-19	20-24	25-29	30-34	35-39	40-44	45-49	50-54	55-59	60-64	65-69	70-74	75-79	80-84	85+	Gesamt
1980	0	0	1	4	5	13	37	138	465	886	1.698	2.433	2.439	4.848	6.179	4.836	2.069	623	26.674
1985	0	0	1	3	5	13	36	110	433	1.009	1.913	3.138	3.616	3.110	5.205	4.772	2.640	934	26.938
1990	0	0	0	1	8	5	37	123	318	991	2.084	3.315	4.605	4.658	3.232	4.133	2.666	1.247	27.423
1991	0	1	1	2	5	18	38	117	356	871	2.130	3.292	4.793	4.678	3.677	3.784	2.696	1.326	27.785
1992	0	0	0	3	2	10	25	122	348	806	2.113	3.218	4.925	4.742	4.086	3.320	2.742	1.420	27.882
1993	0	0	0	2	9	4	40	117	353	746	2.121	3.342	4.833	5.018	4.635	3.059	2.696	1.439	28.414
1994	2	0	0	1	3	15	40	116	340	709	1.989	3.393	4.594	5.435	4.774	2.566	2.694	1.428	28.099
1995	1	1	1	2	7	13	37	102	360	745	1.836	3.598	4.489	5.781	5.005	2.854	2.590	1.465	28.887
1996	1	1	0	1	5	12	32	100	318	797	1.673	3.597	4.529	5.737	4.790	3.086	2.333	1.350	28.362
1997	2	0	0	2	2	7	27	115	362	783	1.541	3.407	4.575	5.723	4.934	3.445	2.045	1.487	28.457
1998	0	0	0	0	6	4	28	107	334	818	1.398	3.399	4.596	5.572	5.195	3.895	1.810	1.513	28.675
1999	1	1	0	3	3	5	31	137	345	849	1.413	3.077	4.529	5.301	5.332	3.968	1.640	1.579	28.214
2000	0	1	1	0	3	6	21	106	356	809	1.486	2.974	4.854	5.424	5.690	4.156	1.822	1.435	29.144
2001	0	0	1	1	1	5	22	81	312	800	1.414	2.554	4.710	5.150	5.931	4.078	2.108	1.396	28.564
2002	1	0	0	1	5	4	24	85	302	804	1.535	2.429	4.710	5.328	5.735	4.140	2.351	1.288	28.742
2003	0	1	1	2	4	4	33	111	311	826	1.534	2.334	4.458	5.403	5.632	4.329	2.533	1.161	28.677
2004	1	0	1	4	1	5	23	89	322	764	1.516	2.236	4.294	5.636	5.427	4.729	2.685	1.087	28.820
2005	1	0	0	4	5	3	15	68	307	806	1.435	2.275	3.905	5.731	5.357	4.998	2.904	1.166	28.980
2006	2	0	0	0	2	5	17	65	266	755	1.512	2.552	3.546	5.625	5.343	4.963	2.848	1.397	28.898
2007	0	1	0	4	6	8	12	62	254	754	1.519	2.402	3.263	5.787	5.375	5.151	3.046	1.499	29.143
2008	1	0	0	1	2	6	16	50	234	725	1.510	2.466	3.288	5.600	5.743	5.013	3.230	1.620	29.505

FRAUEN	Alter																		
	0-4	5-9	10-14	15-19	20-24	25-29	30-34	35-39	40-44	45-49	50-54	55-59	60-64	65-69	70-74	75-79	80-84	85+	Gesamt
1980	0	0	1	1	1	9	12	39	72	146	218	398	435	775	934	902	522	297	4.762
1985	0	1	1	1	5	5	17	39	85	171	262	491	704	654	1.083	958	707	362	5.546
1990	1	0	0	0	6	4	13	49	122	238	381	519	787	1.138	910	1.145	897	585	6.795
1991	1	0	1	0	2	8	22	70	118	222	448	534	901	1.130	1.015	1.172	1.005	603	7.252
1992	0	0	0	1	4	11	20	74	135	262	417	547	830	1.146	1.196	1.055	986	680	7.364
1993	2	0	3	0	0	6	25	57	155	271	473	554	865	1.192	1.362	1.029	1.062	673	7.729
1994	0	1	0	3	1	6	27	56	165	268	515	664	821	1.231	1.531	956	1.022	794	8.061
1995	1	0	0	2	2	9	18	63	161	290	460	676	881	1.208	1.422	1.042	1.150	875	8.260
1996	0	0	0	1	0	3	27	69	177	286	464	762	863	1.249	1.481	1.171	1.039	830	8.422
1997	1	0	0	4	3	5	17	71	188	390	507	754	934	1.206	1.453	1.363	1.007	880	8.783
1998	0	1	0	2	1	1	23	97	196	366	502	794	1.010	1.220	1.563	1.545	960	1.015	9.296
1999	2	0	0	1	0	5	14	72	177	358	525	820	1.095	1.229	1.521	1.630	891	1.094	9.434
2000	0	0	1	0	1	9	18	74	220	405	569	881	1.158	1.241	1.597	1.664	920	1.088	9.846
2001	0	0	0	2	0	4	11	64	187	433	633	844	1.201	1.241	1.609	1.698	1.045	1.033	10.005
2002	0	0	0	1	4	4	11	65	228	440	686	887	1.225	1.332	1.573	1.651	1.276	1.007	10.390
2003	1	0	1	1	3	1	13	72	226	445	725	862	1.252	1.366	1.637	1.650	1.407	984	10.646
2004	1	0	2	4	5	2	20	56	191	478	719	947	1.368	1.520	1.537	1.723	1.476	977	11.026
2005	0	0	0	2	2	4	7	60	250	497	809	1.055	1.313	1.653	1.583	1.814	1.594	1.058	11.701
2006	0	0	0	0	0	5	13	56	197	482	808	1.112	1.360	1.737	1.617	1.818	1.496	1.172	11.873
2007	3	1	1	1	4	8	13	56	178	482	827	1.159	1.365	1.855	1.710	1.774	1.652	1.290	12.379
2008	2	0	2	2	3	7	15	60	195	499	896	1.232	1.386	1.918	1.882	1.830	1.576	1.336	12.841

Gesamt	
1980	31.436
1985	32.484
1990	34.218
1991	35.037
1992	35.246
1993	36.143
1994	36.160
1995	37.147
1996	36.784
1997	37.240
1998	37.971
1999	37.648
2000	38.990
2001	38.569
2002	39.132
2003	39.323
2004	39.846
2005	40.681
2006	40.771
2007	41.522
2008	42.346



Quelle: Robert Koch Institut, "Krebs in Deutschland 2005/2006 Häufigkeiten und Trends", 7. Ausgabe, 2010