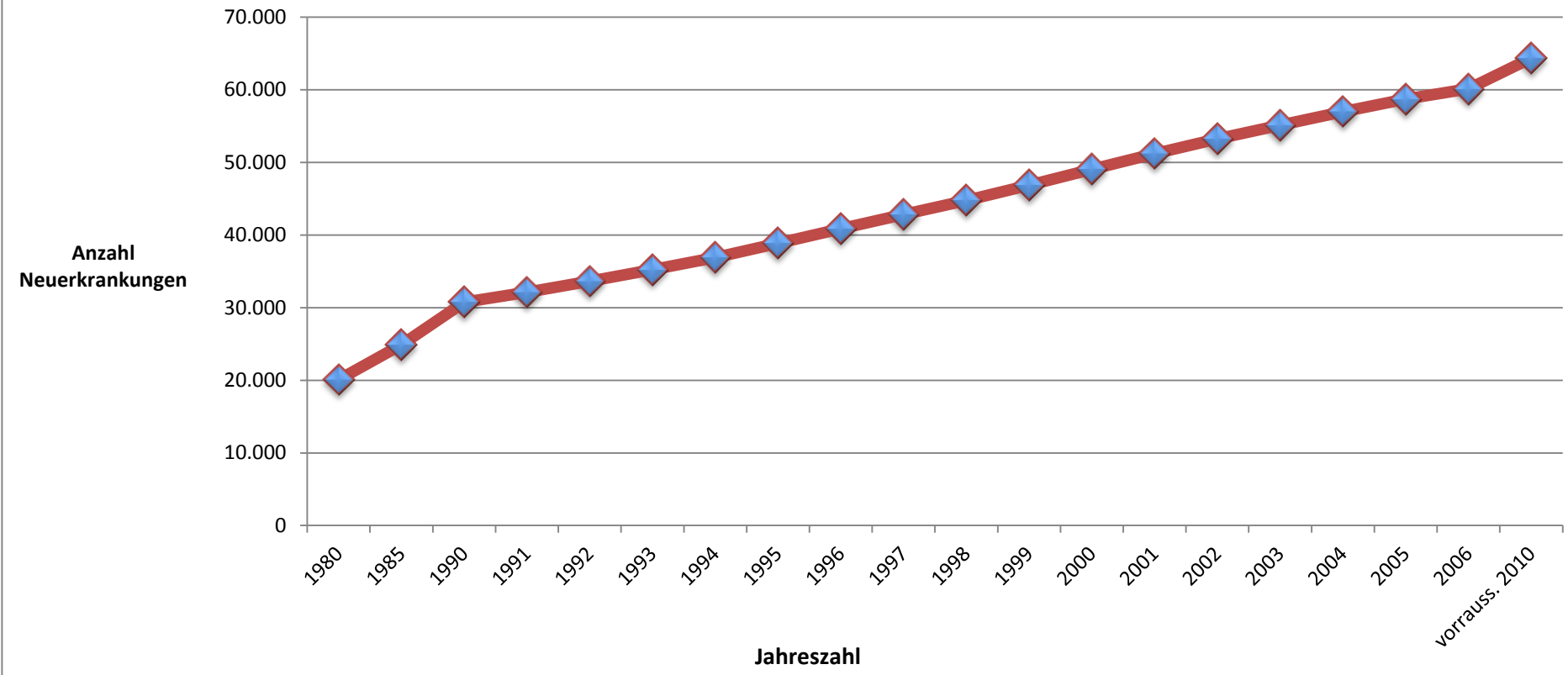


Gesamte Zahl der Neuerkrankungen: Prostatakrebs

MÄNNER	Alter													
	0-14	15-34	35-39	40-44	45-49	50-54	55-59	60-64	65-69	70-74	75-79	80-84	85+	Gesamt
1980	0	0	0	0	96	269	868	1.124	3.857	5.736	5.050	2.349	750	20.100
1985	0	0	0	0	178	432	1.463	2.292	3.263	6.397	6.211	3.524	1.129	24.890
1990	0	0	0	0	221	809	2.183	3.830	6.014	5.073	6.751	4.220	1.659	30.760
1991	0	0	0	0	216	885	2.410	4.162	6.306	5.796	6.361	4.265	1.744	32.140
1992	0	0	0	0	218	942	2.692	4.455	6.697	6.698	5.755	4.338	1.840	33.630
1993	0	0	0	0	227	978	3.030	4.681	7.306	7.530	5.121	4.418	1.936	35.230
1994	0	0	0	0	240	997	3.377	4.961	8.035	8.085	4.770	4.444	2.012	36.920
1995	0	0	0	0	263	978	3.705	5.400	8.708	8.389	5.017	4.327	2.086	38.870
1996	0	0	0	0	292	942	4.003	5.937	9.229	8.639	5.694	3.997	2.143	40.880
1997	0	0	0	0	316	947	4.199	6.590	9.585	8.997	6.453	3.551	2.202	42.840
1998	0	0	0	0	336	987	4.290	7.356	9.754	9.595	7.083	3.115	2.258	44.770
1999	0	0	0	0	352	1.044	4.323	8.142	10.068	10.305	7.423	2.908	2.298	46.860
2000	0	0	0	0	367	1.148	4.194	8.885	10.638	10.938	7.587	3.029	2.276	49.060
2001	0	0	0	0	383	1.279	4.002	9.544	11.389	11.344	7.701	3.403	2.177	51.220
2002	0	0	0	0	401	1.391	3.994	9.941	12.289	11.515	7.884	3.776	2.042	53.230
2003	0	0	0	0	419	1.486	4.137	10.089	13.334	11.467	8.238	4.038	1.909	55.120
2004	0	0	0	0	439	1.567	4.347	10.085	14.338	11.577	8.652	4.145	1.854	57.000
2005	0	0	0	0	460	1.643	4.751	9.712	15.146	12.021	8.933	4.146	1.901	58.710
2006	0	0	0	0	481	1.725	5.258	9.188	15.737	12.602	9.019	4.130	1.978	60.120
vorrauss. 2010	0	0	0	0	529	1.889	5.720	9.191	13.545	15.982	9.806	5.296	2.408	64.370

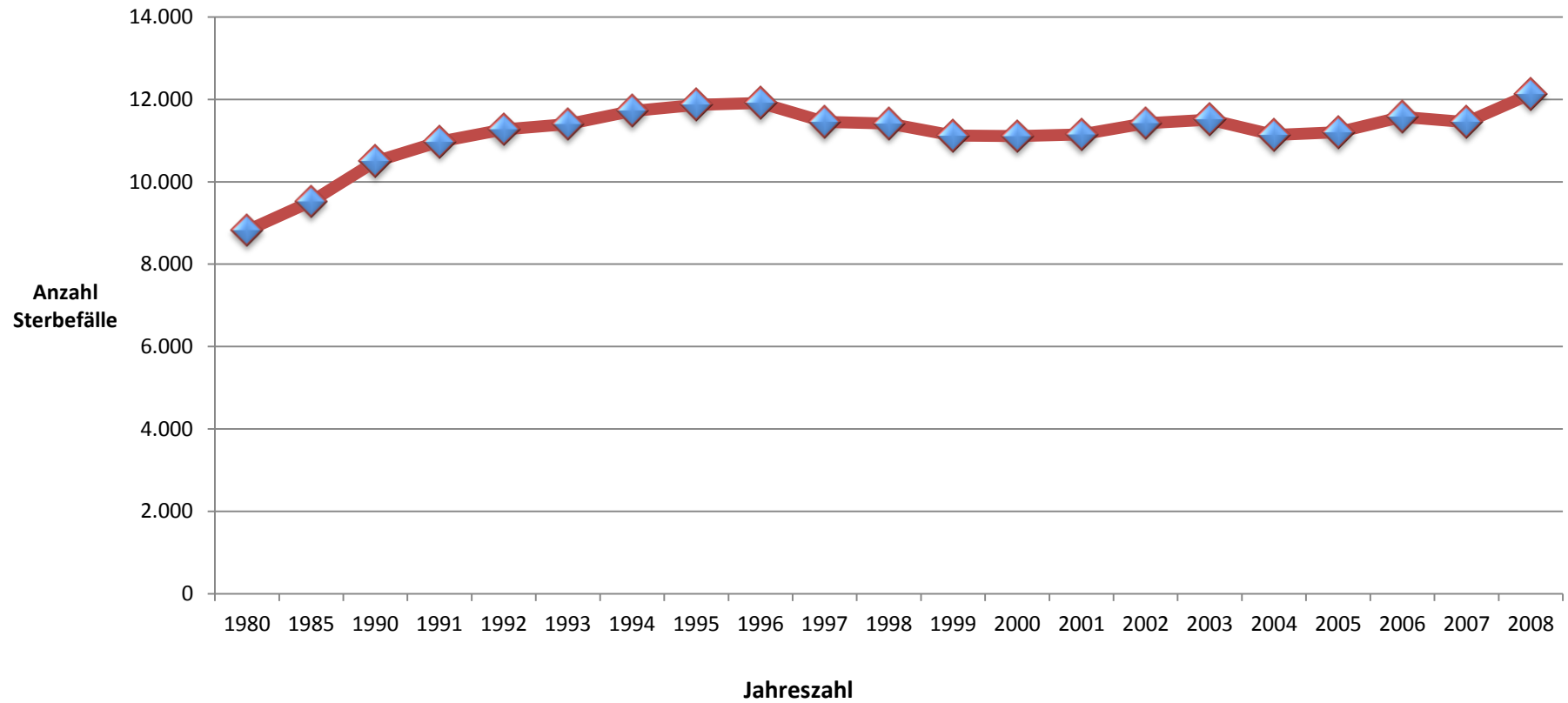
Gesamte Neuerkrankungen Prostatakrebs



Gesamte Zahl der Sterbefälle: Prostatakrebs

MÄNNER	Alter																			
	0-4	5-9	10-14	15-19	20-24	25-29	30-34	35-39	40-44	45-49	50-54	55-59	60-64	65-69	70-74	75-79	80-84	85+	Gesamt	
1980	0	0	0	0	0	1	2	0	5	20	81	179	289	1.003	1.969	2.446	1.801	1.022	8.818	
1985	0	0	0	1	0	2	2	1	5	40	76	246	464	644	1.828	2.511	2.365	1.337	9.522	
1990	1	0	0	0	0	6	3	3	4	24	99	221	575	1.004	1.229	2.592	2.677	2.058	10.496	
1991	0	1	0	0	1	5	2	1	6	25	138	273	620	1.020	1.365	2.524	2.778	2.213	10.972	
1992	0	0	0	0	0	2	0	2	7	30	132	322	670	1.099	1.505	2.286	2.889	2.331	11.275	
1993	0	0	0	1	2	1	0	4	8	25	133	302	636	1.125	1.684	1.990	2.933	2.557	11.401	
1994	0	0	0	0	0	1	1	1	5	25	108	324	666	1.236	1.853	1.769	2.976	2.754	11.719	
1995	0	0	0	0	2	2	0	2	6	26	110	344	631	1.310	1.774	1.839	2.866	2.956	11.868	
1996	0	0	0	0	0	0	2	2	5	26	89	373	685	1.352	1.779	1.915	2.682	3.006	11.916	
1997	0	0	0	1	1	3	1	1	6	32	93	332	624	1.280	1.665	2.066	2.323	3.026	11.454	
1998	0	0	0	1	0	1	2	6	15	39	84	356	706	1.256	1.712	2.269	1.959	3.011	11.417	
1999	0	0	0	0	1	0	0	1	9	37	79	327	733	1.153	1.857	2.303	1.704	2.919	11.123	
2000	0	0	0	0	0	0	1	3	4	25	97	286	810	1.179	1.832	2.236	1.774	2.860	11.107	
2001	1	0	0	0	0	0	1	2	7	30	95	264	803	1.133	1.939	2.213	1.864	2.798	11.150	
2002	0	0	0	0	0	0	1	3	3	26	106	278	806	1.256	1.991	2.158	2.146	2.648	11.422	
2003	0	0	0	0	1	1	0	0	10	18	94	247	766	1.311	1.918	2.281	2.342	2.521	11.510	
2004	1	0	0	0	0	0	1	0	9	38	75	245	717	1.397	1.695	2.373	2.419	2.165	11.135	
2005	0	0	0	0	1	0	1	1	5	27	108	246	644	1.313	1.724	2.459	2.366	2.308	11.203	
2006	0	0	0	1	0	0	0	4	12	25	115	258	563	1.431	1.924	2.494	2.348	2.402	11.577	
2007	1	1	0	0	0	0	0	0	9	26	79	290	557	1.412	1.904	2.411	2.366	2.392	11.448	
2008	0	0	0	0	0	0	0	2	6	20	82	261	545	1.450	1.961	2.536	2.626	2.645	12.134	

Gesamte Sterbefälle Prostatakrebs



Quelle: Robert Koch Institut, "Krebs in Deutschland 2005/2006 Häufigkeiten und Trends", 7. Ausgabe, 2010